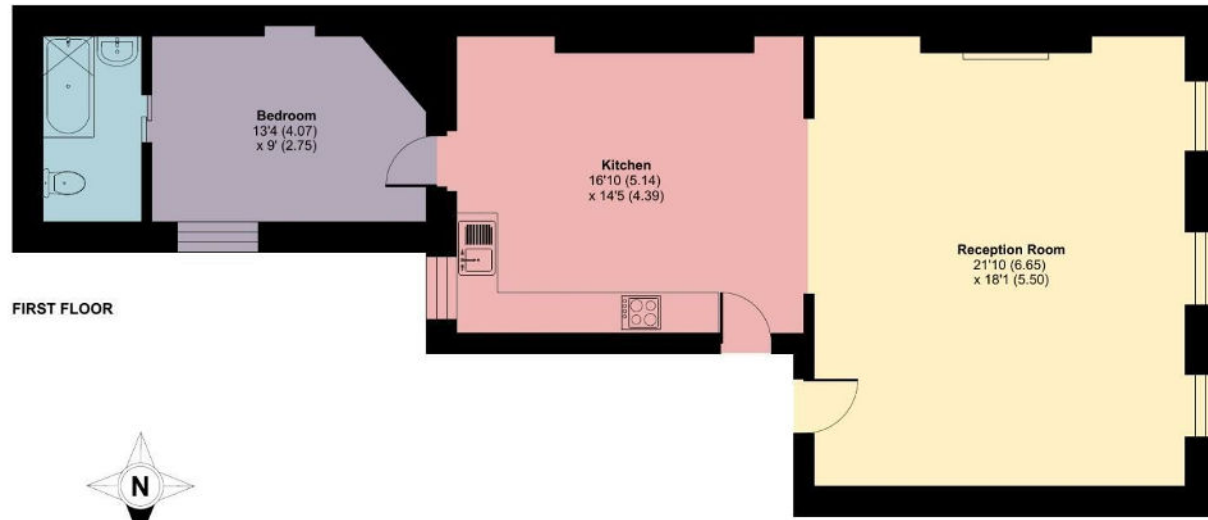


Milsom Street, Bath, BA1

Approximate Area = 825 sq ft / 76.6 sq m
For identification only - Not to scale

FLOOR PLAN:



Floor plan produced in accordance with RICS Property Measurement 2nd Edition, incorporating International Property Measurement Standards (IPMS2 Residential). © nichicom 2025. Produced for Zest Sales and Lettings Ltd. REF: 1458605

EPC CHART:

ZEST PROPERTY SERVICES

1 a Mile End
London road
Bath
Ba1 6pt

T: 01225 48 10 10
E: happytohelp@zestlovesproperty.com



VIEWING AND OFFER PROCEDURE: If you wish to view this property, please contact our office on the number provided. All offers on this property should be made through this office. In order to fulfill our responsibilities to the seller, when offering on this property, you will be asked a series of questions about how you intend to fund the purchase and whether or not your offer is dependent on the sale of another property. This information provided by you, along with the amount of your offer, will then be forwarded onto the seller for consideration.

MONEY LAUNDERING REGULATIONS – Intending purchasers will be asked to produce identification documentation at a later stage and we would ask for your cooperation with this in order that there will be no delay in agreeing the sale.

DISCLAIMER: All appliances, apparatus, equipment, fixtures and fittings listed in these details are only 'as seen' and have not been tested by Zest, nor have we sought certification of warranty or service, unless otherwise stated. It is in the buyers interests to check the working condition of any appliances. Any floor plans and or measurements provided are given as a general guide to room layout and design only. They are supplied for guidance only – they are not exact and must not be relied upon for any purpose, and therefore must be considered incorrect. As a potential buyer you are advised to recheck the measurements before committing to any expense. These details are offered on the understanding that all negotiations are to be made through this company. Neither these particulars, nor verbal representations, form part of any offer or contract, and their accuracy cannot be guaranteed. Zest has not sought to verify the legal title of the property and the buyer(s) must obtain verification from their solicitor.



32, Milsom Street, Bath, BA1 1DG

1 Bedroom Apartment - First Floor

Offers in excess of
£325,000

- Grade II Listed Georgian First Floor Apartment
- 825 Sq Ft Of Spacious Open Plan Living Accommodation
- Offered To The Market With No Onward Chain
- Very Well Presented Throughout
- Situated In A Desirable Location In The Heart Of Bath
- Leasehold, Council Tax Band B

DETAILS

A stunning Georgian Grade II Listed one double bedroom first floor apartment situated on Milsom Street in the heart of the world heritage city of Bath. The property is very well presented throughout and offered to the market with No Onward Chain.



DESCRIPTION

You enter the property on the first floor into a fabulous open plan living space providing ample room for defined sitting, dining and kitchen areas. There are three large sash windows to the front which allow light to flood in and through the space. There are floorboards throughout and an abundance of period features. The kitchen provides a range of wall and base units with built in appliances. To the rear of the apartment you will find the double bedroom with en-suite bathroom. This sleek space benefits from a panelled bath with shower over, wash hand basin and w.c.

BATH CITY CENTRE

Bath's compact centre is overflowing with places to eat and drink, plus some of the finest independent shops in Britain, making it an ideal place to live. Immerse yourself in Bath's remarkable collection of museums and galleries, and enjoy year-round festivals, theatre, music and sports. The Rec is home to Bath Rugby and located next to the weir and famous Pulteney Bridge. Transport links are straightforward, trains run to London Paddington every 30 minutes with the journey time taking approximately 1 hour and 15 minutes. Trains also run regularly to Bristol and destinations further west.

TENURE

Leasehold with 125 year lease commencing 2007
 Management Company: Touchstone Residential Lettings
 Freeholder: BANES