



## PULTENEY ROAD, BATH 4 BED FLAT, FURNISHED

- STUDENT PROPERTY
- Available 26/27 academic year
- 4 Double bedrooms
- 1 Bathroom
- Close to city centre
- Gas, Water, Electric and Wifi Included
- September start date

**\*\*STUDENT PROPERTY\*\*** price includes Gas, Water, Electric and Wifi.

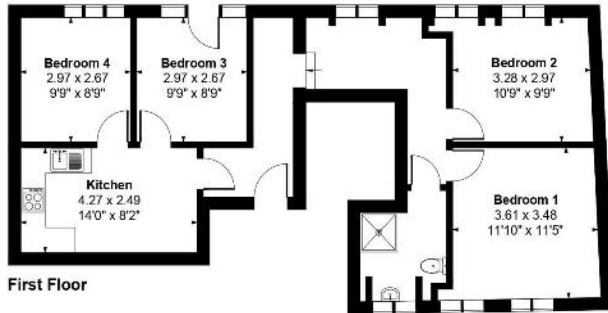
We are delighted to offer a 4 bedroom property, situated in the Widcombe area, a short walk to Bath city centre, with a modern open plan kitchen/dining area.

**\*\* RENT PRICE INCLUDES FREE CONTENTS INSURANCE INCLUDING ACCIDENTAL DAMAGE FOR ALL LAPTOPS AND IPADS\*\***



### F3, 2 Canal Bridge, Bath, BA2 4FA

Approximate Gross Internal Area  
Main House = 72 sq m (777 sq ft)



© Meyer Energy 2024. Drawn to RICS guidelines. Not drawn to scale.  
Plan is for illustration purposes only. All features, door openings, and window locations are approximate.  
All measurements and areas are approximate and should not be relied on as a statement of fact.



#### APPLICANT GUIDE:

1. View the property or arrange for a representative you trust to view it for you.
2. If you would like to take the property make an offer by completing the "Tenant Application Form" given to you at the time of viewing and either drop off at the office or send a copy via email to [happytohelp@zestlovesproperty.com](mailto:happytohelp@zestlovesproperty.com)
3. Once your offer has been put forward to the landlord and they have accepted your application you will be required to pay the Holding Fee of 1 weeks rent and complete and submit our Tenant Terms of Business (where you will also be required to upload proof of identity). This then secures the property (only once the holding fee has been paid) and any other viewings will be cancelled. These funds will be deducted from your move in monies (rent) once your application is approved.
4. You will then be passed to our friendly, Zest New Lets team, who will commence your referencing, application and contracts process. Please note, you risk forfeiting your holding deposit if you do not supply the required referencing information within 15 days from the initial request. If you are a Company then a Company Agency Fee will apply of £468. The deposit is usually equal to five week's rent. Deposits are protected with the Deposit Protection Service (DPS) and must be paid by the applicant and not a third party. Please ensure you provide references for employment, previous tenancies and, if self-employed, your latest set of company accounts to hand. If you do not meet the required salary limits (2.5 times the monthly rent) you will require a guarantor who is a UK home owner and able to cover your obligations. Alternatively, you can pay all of the rent in advance.
5. Pay your first month's rent before the start date of your tenancy. Rent is paid monthly at the advertised PCM figure. Bank transfers are accepted, but payment is not cleared until the funds are received into our client account.

#### ZEST PROPERTY SERVICES

1A MILE END  
LONDON ROAD  
BATH  
BA1 6PT

T: 01225 48 10 10  
E: [HAPPYTOHELP@ZESTLOVESPROPERTY.COM](mailto:HAPPYTOHELP@ZESTLOVESPROPERTY.COM)

